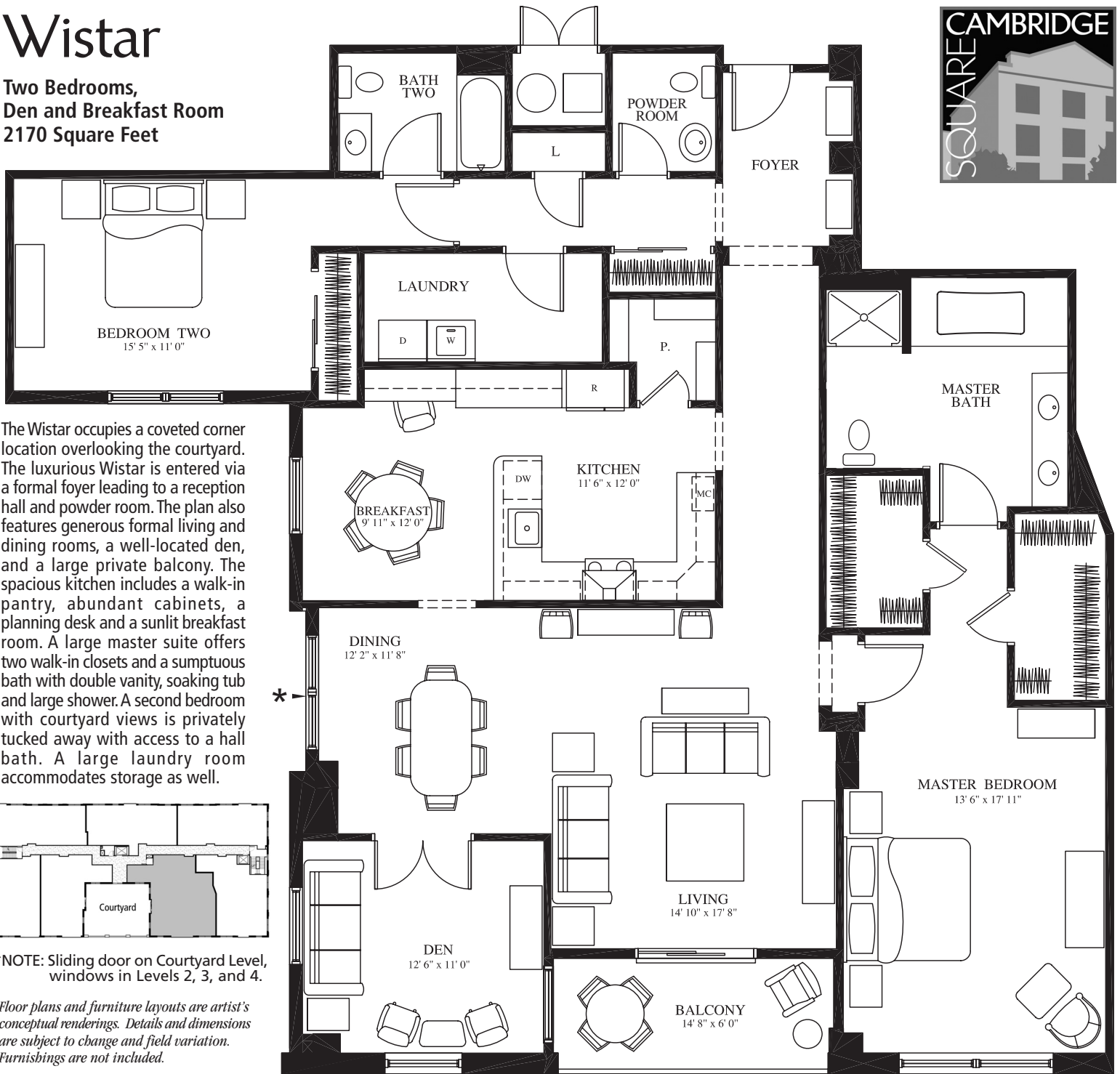
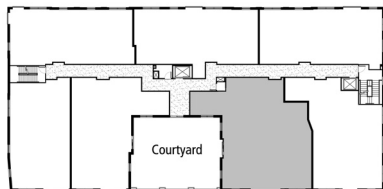


Wistar

Two Bedrooms,
Den and Breakfast Room
2170 Square Feet



The Wistar occupies a coveted corner location overlooking the courtyard. The luxurious Wistar is entered via a formal foyer leading to a reception hall and powder room. The plan also features generous formal living and dining rooms, a well-located den, and a large private balcony. The spacious kitchen includes a walk-in pantry, abundant cabinets, a planning desk and a sunlit breakfast room. A large master suite offers two walk-in closets and a sumptuous bath with double vanity, soaking tub and large shower. A second bedroom with courtyard views is privately tucked away with access to a hall bath. A large laundry room accommodates storage as well.



*NOTE: Sliding door on Courtyard Level, windows in Levels 2, 3, and 4.

Floor plans and furniture layouts are artist's conceptual renderings. Details and dimensions are subject to change and field variation. Furnishings are not included.