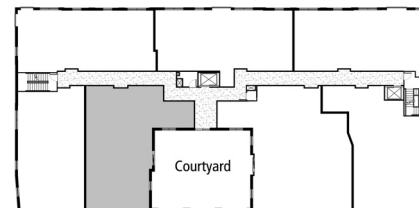


## Rosemont

**Two Bedrooms and Den**  
**1670 Square Feet**

The Rosemont enjoys a prime corner location with courtyard views from several rooms. Windows abound in the flowing living and dining rooms which adjoin a spacious island kitchen. A generous balcony invites outdoor living. A private den is ideally located. The Rosemont's roomy master suite offers a walk-in closet and two additional closets. The luxurious master bath is highlighted by a soaking tub, large shower and double vanity. A very private guest bedroom overlooks the courtyard and features a walk-in closet and access to a full bath. Completing the Rosemont is a sizable laundry/storage room.



\*NOTE: Sliding door on Courtyard Level, windows in Levels 2, 3, and 4.

*Floor plans and furniture layouts are artist's conceptual renderings. Details and dimensions are subject to change and field variation. Furnishings are not included.*